



Pressure Washers

SUPER STEAMER - BELT DRIVE
PN 09071A
PN 09071B (S.S.)

Operators Manual
and
Replacement Parts Book

INTRODUCTION

Thank you for selecting a high pressure power washer from Delco Pressure Washers.

Your pressure washer has been manufactured using the most advanced components in the pressure industry.

When operated properly, our equipment has been designed and manufactured to give you years of trouble free, reliable use, with a minimal amount of regular maintenance.

Your pressure washer is mechanical, as with all mechanical equipment it requires proper installation, operation and maintenance as outlined in this manual.

The Operators Manual has been written for your benefit. For your safety and the safety of others, we recommend you and all operators read and understand the contents.

Should you experience any difficulty with your Delco pressure washer, please contact your nearest Delco Distributor immediately.

We are aware of your investment in an Delco pressure washer, therefore, our prime concern is that you become one of our "satisfied" owners. Please feel free to send us your comments and ideas.

THANK YOU!!!

PRESSURE WASHER LIMITED WARRANTY

1. **DELCO Cleaning Systems, LLC** warrants its products for a period of one year from the date of purchase, against defects in material and/or workmanship. The warranty covers parts and labor, but excludes transportation.
2. Normal wear and tear items such as valves, seals, etc., are warranted for the initial 30 days following purchase by the end-user.
3. The high-pressure hose and accessories (trigger gun, extension/lance/wand and cleaning nozzles) are warranted for the initial 30 days following purchase by the end-user.
4. The burner coil on all **DELCO Cleaning Systems, LLC**, hot water pressure washers and steam cleaners is warranted for five (5) years, excluding abuse due to leaving unit in unheated building, causing coil to freeze and burst.
5. Parts repaired or replaced under this warranty (except wear items) are warranted for the balance of the original warranty period or ninety (90) days, whichever is longer. Defective parts replaced under this warranty are the property of **DELCO Cleaning Systems, LLC**.
6. All warranty service will be performed by a trained technician employed by an **DELCO Cleaning Systems, LLC** distributor/dealer. Servicing distributor/dealer will abide by the **DELCO Cleaning Systems, LLC**, Service Center Warranty Policy.
7. Warranty does not cover damage caused by freezing, abuse or chemicals. Abuse includes but is not limited to unauthorized repair, alterations carried out by any entity or individuals other than **DELCO Cleaning Systems, LLC**, authorized service personnel, damage caused by contaminants in the water supply or operation in a manner which conflicts with instructions found in the Owners Manual.
8. **DELCO Cleaning Systems, LLC**, and its distributors/dealers disclaim responsibility for any loss of time, use of equipment, loss of income, or any incidental or consequential damages.
9. Settlement of any warranty claim will be at the sole discretion of **DELCO Cleaning Systems, LLC**.

Thank You for Purchasing our Products!

Effective January, 2005, and supercedes all other warranties.

TABLE OF CONTENTS

Operator Safety Instructions	5
Introduction and Machine Specifications	7
Machine Operation Instructions	8
Maintenance	9
Freeze-Up Prevention	9
How to Correct Problems in the Machine	10 - 11
Pump Drawing and Parts List	12
Pump Parts and Repair Kits List	13
Wiring Diagram -120V	14
Electrode Check Schematic	14
Fuel Filter Drawing	15
Burner Drawing and Parts List	16 - 17
Assembly Drawing - #1 and Parts List	18 - 21
Assembly Drawing - #2	22
Parts List	23
Assembly Drawing - #3	24
Parts List	25

OPERATOR SAFETY INSTRUCTIONS

- ▲DANGER** Means: Severe bodily injury or death can occur to you or other personnel if the **DANGER** statements found on your machine or in your Owner's Manual are ignored or are not adhered to. Read and observe all **DANGER** statements found in your Owner's Manual and on your machine.
- ▲WARNING** Means: Injury can occur to you and to other personnel if the **WARNING** statements found on your machine or in your Owner's Manual are ignored or are not adhered to. Read and observe all **WARNING** statements found in your Owner's Manual and on your machine.
- ▲CAUTION** Means: Damage can occur to the machine or to others property if the **CAUTION** statements found on your machine or in your Owner's Manual are ignored or are not adhered to. Read and observe all **CAUTION** statements found in your Owner's Manual and on your machine.
- ▲DANGER:** Failure to read the Owner's Manual prior to using this machine could result in injury to you or to other personnel; damage to the machine or to other property could occur as well. You must have training in the operation of this machine before using it. If you or your operator(s) cannot read English, have this manual explained fully before attempting to operate this pressure washer.
- ▲DANGER:** Machines can cause an explosion when operated near flammable materials and vapors. Do not use this machine with or near fuels, grain dust, solvents, thinners, or other flammable materials.
- ▲DANGER:** This machine emits carbon monoxide. Asphyxiation could occur if the unit is used in an area with poor or inadequate ventilation. Operate unit in a well-ventilated area or connect to a flue.
- ▲DANGER:** Operating a machine that is not completely or fully assembled could result in injury or property damage. Do not operate this machine until it is completely assembled. Inspect hoses, fittings, and heat exchanger for leaks or fatigue before each use.
- ▲DANGER:** Filling a machine with fuel in an explosive or poorly-ventilated area can cause an explosion. Only fill the fuel tank in an open area. Do not fill the tank near open flames or while the unit is running. Do not smoke while filling the tank. Do not over-fill the tank. Wipe up any spills. Tighten the cap on the tank when finished. Use kerosene, or #1 or #2 diesel as a fuel only. **Do not use K-1 kerosene.**
- ▲DANGER:** Tampering with the machine's factory preset relief valve setting could result in a machine explosion. Do not attempt to change the settings. Discontinue use if a malfunction occurs and contact your local authorized Delco distributor.
- ▲DANGER:** Operating a pressure washer with a malfunctioning burner or burner controls could result in a machine explosion. Inspect burner and burner control operation before each use. If you suspect a problem with the burner, discontinue use immediately and contact your local authorized Delco distributor for assistance.
- ▲DANGER:** Failure to properly maintain the heat exchange coil can result in a steam explosion. Scale or lime build-up will act as an insulation and decrease the efficiency of the heat exchanger coil and will also cause hot spots. This can result in a weakening of the tubing which in turn may cause a rupture. **Reference the Operator Safety Manual, part no. 78336A for more information on maintenance of the heat exchange coil.**
- ▲DANGER:** Operating a machine with a ground fault circuit interrupter (GFCI) that has been tampered with, or one that repeatedly trips, could result in an electrocution. Do not remove, disable, or tamper with the GFCI. If the ground fault circuit interrupter repeatedly trips, discontinue use of the machine. Contact your local authorized Delco distributor for assistance with the GFCI.
- ▲DANGER:** Electrocution could occur if the machine is used on a power circuit that repeatedly trips or is undersized. Have a licensed electrician check the fuse, circuit breaker or power supply, and/or contact your local authorized Delco distributor for assistance.
- ▲DANGER:** Electrocution could occur if maintenance and repairs are performed on a unit that is not properly disconnected from the power source. Disconnect the power supply before attempting any maintenance or service.
- ▲DANGER:** Use of this machine with a damaged power cord could result in an electrical shock. Do not use the machine if the power cord is damaged. Do not use the electrical cord to move the machine.
- ▲WARNING:** Water under high pressure can cause severe injury. Keep all persons away from the machine and the spray area. Always point the wand toward the object being cleaned.
- ▲WARNING:** Injury to the operator or bystanders could occur if the machine is operated without all of the guards being in place on the unit. When operating the machine, all guards must be in place.

- ▲WARNING:** Operating a pressure washer under high pressure without a securely fastened hose, gun and spray nozzle(s) could result in bodily injury or property damage. Make sure the spray nozzle, gun and hose are securely fastened before operating the machine. Do not remove the nozzle or disconnect the high pressure hose while the system is pressurized and/or running.
- ▲WARNING:** Machines have moving parts and hot areas that can cause injury. Keep hands, feet, and loose clothing away from the pressure washer while it is running. After use, allow an adequate amount of cool-down time before attempting to perform any maintenance or service to this unit.
- ▲WARNING:** Failure to wear safety goggles and protective clothing when operating a pressure washer reduces operator safety. Always wear safety goggles and protective clothing when the machine is running or when operating machine.
- ▲WARNING:** Operating this pressure washer without the appropriate decals could result in operator injury or damage. Make sure all labels and instructional information are fastened to the machine. Get new labels and decals from your Delco distributor.
- ▲CAUTION:** Maintenance and repairs performed by unauthorized personnel could result in damage or injury. Servicing of this unit must always be referred to an authorized Delco distributor.
- ▲CAUTION:** Maintenance and repairs performed by unauthorized personnel will void your warranty. Servicing of this unit must always be referred to an authorized Delco distributor.
- ▲CAUTION:** Electrical damage can occur if the machine is exposed to direct and/or over spray. Always point the wand toward the object being cleaned.
- ▲CAUTION:** Using an extension cord with your pressure washer will result in a voltage drop and loss of power. Use of an extension cord is not recommended.
- ▲CAUTION:** Use of this machine to move other objects or to climb on could result in injury or damage.
- ▲CAUTION:** Operating a pressure washer when the pump is low on oil could cause pump damage. Always check your oil before using the machine. Use SAE 30 weight oil.
- ▲CAUTION:** Operating a pressure washer with insufficient water flow can damage the pump. Water should be turned on full-force to avoid insufficient water flow.
- ▲CAUTION:** Pump damage could occur if the pressure washer is ran for more than five (5) minutes with the trigger released (closed).
- ▲CAUTION:** Your machine warranty will be voided if anything other than genuine Delco parts are used on your pressure washer. Always use Delco parts for replacement.

INTRODUCTION & MACHINE SPECIFICATIONS

Get sparkling clean results with the steam cleaning power of the Super Steamer. Steam spray at 200 psi dissolves grease, oil, paraffin, and hydraulic fluids in seconds. Standard features include a low water shut-off switch, high limit temperature switch, a heavy duty 35' power cord with a ground fault circuit interrupter (GFCI) for operator safety and a Delco fuel/water separating filter system. The Super Steamer is also available in stainless steel.

Model	Super Steamer
Product Code	09071A / 09071B-S.S.
Flow Rate (GPM)	2.7
Pressure (psi)	200
Motor/Voltage	¾ hp / 115 V
Fuel	Kerosene #1 or #2 Diesel
Temperature Rise (°F)	300° F
Pump	Ceramic Plunger
Drive	Belt
Nozzles	Steam orifice
Soap Metering Valve	¼" adjustable
Coil	Schedule 80
Power Cord	35' GFCI
Fuel Capacity	8 gallon
Fuel Filter	Delco water separator
High Limit	340°
Safety Relief	Standard
Low Water Shut-Off	Vac-On Switch
Hose	¾" x 50' Hot Pac
Wheels	Stud tread - tubed
Frame Construction	Steel
Dimensions (in.)	L57 x W28 x H36
Weight (lbs)	490 / 550

OPERATING INSTRUCTIONS

NOTE: Following delivery of your Delco pressure washer, inspect the unit for shipping damage and follow these directions:

1. Read all DANGER, WARNING, and CAUTION labels. Read the Owner's Manual that came with your machine before attempting to operate the pressure washer.
2. Fill the fuel tank with kerosene, or #1 or #2 diesel. **Do not use K-1 kerosene.**
3. Locate the unit in a convenient location.
4. Securely fasten the pressure hose connections.
5. Apply pipe sealant or tape at all connections.
6. Connect the water supply and turn it on full force.
7. Check all hose connections for leaks.
8. Check the oil level in the pump before starting the pressure washer.
9. Connect the high pressure hose to the gun.
10. Connect the power cord to an appropriately sized three-wire grounded circuit.
11. The circuit chosen should have no other loads present and should be of the shortest possible length to the main circuit panel. **Test.**
12. Turn the machine to the "OFF" (O) position, before resetting the GFCI.
13. Point the wand towards the floor.
14. Turn the control switch to position one (I) "cold water wash". While pointing the wand toward the floor, allow air to purge from the system. Check the system for leaks.
15. Turn the machine to the "OFF" position (O).
16. Install the nozzle(s) onto the gun.
17. Turn the control switch back to the "cold water wash" (I) position to establish water flow.
18. Turn the control switch to position two (II) "hot water wash". The burner should automatically come on.

▲DANGER: Operating a pressure washer that doesn't have proper water flow could result in an explosion. If water should stop flowing from the gun, turn unit off immediately and contact an authorized Delco service person.

NOTE: On initial start-up, or if the unit runs out of fuel during use, there will be a slight hesitation as the fuel system purges air. Only under these circumstances should there be any hesitation present. After the burner lights there should be no visibly apparent smoke.

19. Point the wand towards the object to be cleaned and proceed with cleaning.
20. For chemically enhanced cleaning follow this procedure:
 - a. Open the metering valve.
 - b. Turn the control switch to position one (I) "cold water wash". While pointing the wand toward the floor, allow air to purge from the system. Check the system for leaks.
 - c. Dial the metering valve to the desired chemical concentration.
 - d. Point the wand towards the object to be cleaned, and proceed with cleaning.
 - e. To rinse with clean water, close the metering valve and continue spraying.
 - f. For chemically enhanced cleaning, place the chemical line in liquid detergent. Open the metering valve to desired chemical concentration. Close the metering valve for rinsing. Flush the chemical feed line with fresh water after each use by placing the end of the chemical feed line into a container of clean, fresh water. Run the unit in the cold water wash position (I) until all traces of the chemical are gone.

▲DANGER: Allowing the detergent level to fall below the chemical feed line opening feeds air into the system which could cause a steam explosion. Air introduced into the system will cause pump damage and create steam space if the burner is on. The detergent level should never fall below the chemical feed line opening. If you should discover this condition, immediately turn the metering valve off.

21. Following hot water washing, turn the control switch to position one (I) and run cold water through the unit until the water exiting the wand is cool, or until the wand is cool to the touch. This period of time can be spent on a cold water rinse.
22. Turn the machine to the "OFF" position (O) and disconnect the power cord.
23. Turn the water supply off and disconnect all hose connections from the machine.
24. Drain hoses and wipe down the unit.
25. Store the machine, hoses, and any accessories in a dry place.

MAINTENANCE

How To Check The Oil

It is critical that the oil in your machine be checked regularly. To check the oil follow this procedure:

1. Locate the oil sight glass on the side of the pump.
2. The oil level should be at the center of the hole.
3. If the oil is below the center, add SAE 30 weight, non-detergent oil.

NOTE: Change the oil after the first 50 hours of use and then after every 500 hours of use. SAE 30 weight oil must be used.

Freeze-Up Prevention

To prevent freeze-up follow these instructions:

1. Drain the float tank.
2. Remove the spray nozzle from the wand.
3. Mix antifreeze concentrate and water in a large container. Read the recommended mixing instructions given with the antifreeze.
4. Fill the float tank with the antifreeze mixture.
5. Put the end of the chemical line in the float tank. Fully open the metering valve.
6. Turn the control switch to position one.
7. Let the pump run until the antifreeze moves through the pump, coils, and pressure hose.
8. Turn the control switch to the "O" position and close the metering valve.
9. Unplug the cord and put the machine in a dry building.

How to Check/Clean the Heat Exchange Coil

The heat exchange coil should be inspected for deposit build-up after 40 hours of use, or once a month, whichever comes first. In hard water areas a water softening system should be employed.

Scaling or liming of the coils is caused by mineral deposits from the water and occurs much faster in hard-water areas and with heavier machine usage. Lime build-up can also be caused by inferior cleaning compounds.

▲DANGER: Failure to properly maintain the heat exchange coil can result in a steam explosion! Scale or lime build-up will act as an insulation and decrease the efficiency of the heat exchanger coil and will also cause "hot spots". This can result in a weakening of the tubing which can lead to a steam explosion.

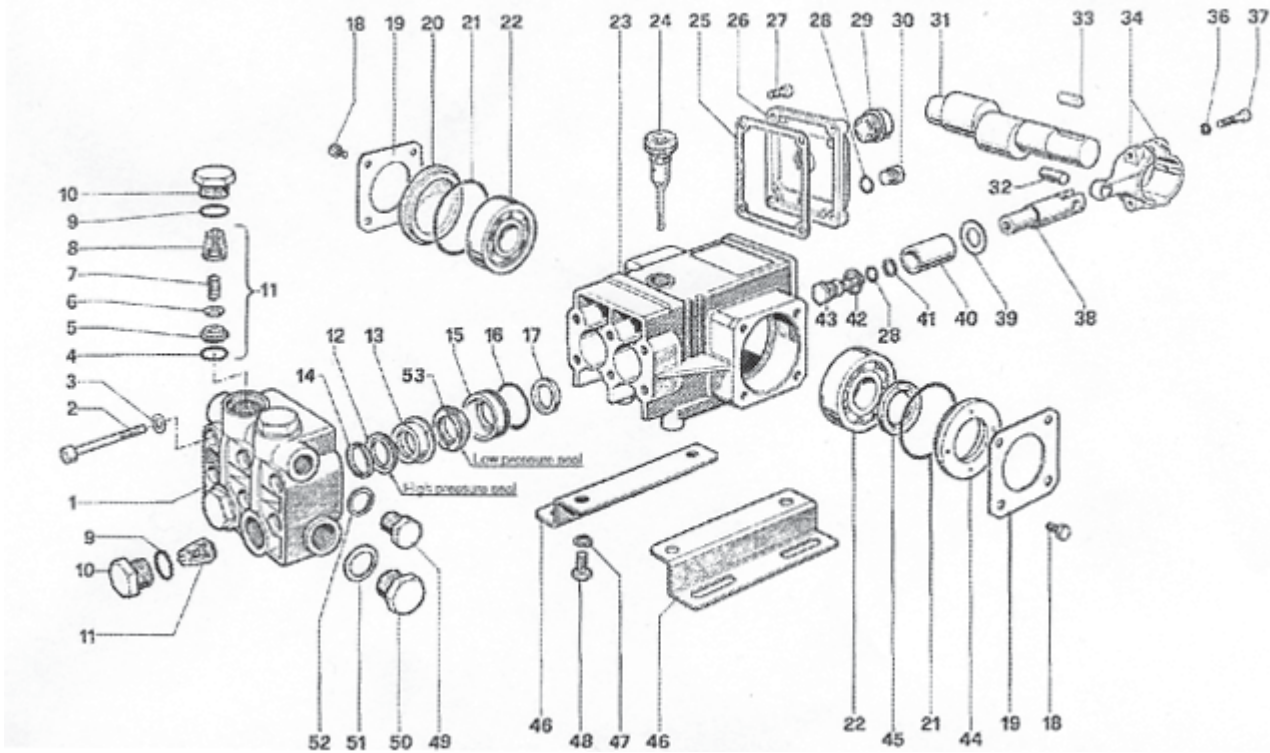
HOW TO CORRECT PROBLEMS IN THE MACHINE

Problem	Cause	Action
The motor will not start	Power cord may not be connected. Switch may not be turned "ON". Ground fault circuit interrupter did not reset. The power cord may be connected to a dead outlet. May have a defective motor, GFCI, or switch. The thermal overload switch tripped.	Connect the power cord. Turn switch to "ON". Reset the ground fault circuit interrupter. Contact a licensed electrician. Contact your authorized Delco dealer. Allow motor to cool, reset thermal switch.
The motor has difficulty starting or is overheating.	Circuit may be too long, overloaded, or conductors may be undersized, supplied with the machine. Incorrect voltage or frequency. The motor is wet. The coils are limed. The spray nozzle is obstructed.	Locate the outlet nearest to the circuit panel which can be reached with the cord Check the voltage and frequency. Contact an authorized Delco service person. Delime the coils. Remove and clean the nozzle.
The pump overheats.	The oil level is low.	Fill to the proper oil level with high quality SAE 30-weight non-detergent oil.
The pump vibrates.	The pump is sucking air. The pump check valves are dirty.	Contact an authorized Delco service person. Contact an authorized Delco service person.
The pump surges when the trigger gun is off.	There is a leak.	Check all fittings. Keep fasteners tight. Contact an authorized service person.
The pump is running but the pressure is low on installation.	The pump is sucking air. The pump valves are sticking. The nozzle is not the correct size. The pump plunger packing is worn.	Make sure the water supply is correct, metering valve closed, or solution above above feed line. Contact an authorized Delco service person. Replace the nozzle. Contact an authorized Delco service person.
The pressure is changing.	The pump valves are worn. The pump valves are dirty. The pump is sucking air. The pump plunger packing is worn.	Contact an authorized Delco service person. Contact an authorized service person. Check the water supply. Make sure all connections are tight. Contact an authorized Delco service person.
The pressure is low after normal use.	The spray nozzle is worn. The pump check valves are worn or dirty. The unloader valve is worn. The pump plunger packing is worn.	Replace the nozzle. Contact an authorized Delco service person. Contact an authorized Delco service person. Contact an authorized Delco service person.
The pump is noisy.	There is air in the suction line. The valves are dirty. The bearings are worn. The incoming liquid is too hot. The suction or delivery valve springs are worn.	Check the water supply. Make sure all fittings are tight. Contact an authorized Delco service person. Contact an authorized Delco service person. Reduce the temperature to ambient. Contact an authorized Delco service person.
There is/has been water in the oil.	The oil seal is worn. The humidity is high. The plunger packing is worn.	Contact an authorized Delco service person. Contact an authorized Delco service person. Contact an authorized Delco service person.
There is water dripping from under the pump.	The plunger packing is worn. The plunger retainer O-ring is worn.	Contact an authorized Delco service person. Contact an authorized Delco service person.

HOW TO CORRECT PROBLEMS IN THE MACHINE

Problem	Cause	Action
Oil is dripping.	The oil seal is worn.	Contact an authorized Delco service person.
The pressure is too high and is released at the unloader or pressure relief valve.	The spray nozzle is not the correct size. The coils are limed. The spray nozzle is obstructed.	Install a new nozzle. Delime the coils. Clean the nozzle.
The machine does not pick up the cleaning solution.	The metering valve is leaking air. The screen on the chemical line is dirty.	Tighten all fittings on the valve. Clean the filter. Replace if damaged.
The pressure is surging.	The spray nozzle is obstructed. The spray nozzle is not the correct size.	Clean the nozzle. Install a new nozzle. Use only a nozzle recommended for the machine.
The gun and the hose are vibrating..	There is an air leak. There is not enough water. The check valve in the pump is damaged.	Tighten all fittings on the suction side of the pump. Check the water level in the tank. Contact an authorized Delco service person.
The pressure relief valve is leaking.	The valve is not correctly adjusted. The pressure relief valve, or seat is worn or damaged. The nozzle is dirty. There is a restriction in the discharge hose. There is a restriction in the coil.	Contact an authorized Delco service person. Contact an authorized Delco service person. Clean the nozzle. Remove the nozzle and flush the line. Clean the coil.
The burner will not start.	The fuel tank is empty. The fuel filter is dirty.	Fill the fuel tank with either #1 or #2 diesel, or kerosene. Change the fuel filter.
	The burner motor does not run. The burner is not turned on.	Push the reset button on the burner motor. If the burner still does not start, contact an authorized service person. Turn the switch to the "ON" position (II).
The pressure is low.	There is an air leak. The belts are loose. The spray nozzle is worn. The water supply is too low. The check valves in the pump are worn or dirty. The plunger packing is worn. The spray nozzle is the wrong size.	Contact an authorized Delco service person. Tighten the belts. Install a new nozzle. Increase the water supply. Make sure the garden hose is $\frac{5}{8}$ " I.D. Contact an authorized Delco service person. Contact an authorized Delco service person. Use only the nozzle recommended for the machine.
The water temperature is too low.	The fuel nozzle is dirty. The fuel filter is dirty. The coils are limed or sooted. There is water in the fuel. The fuel pressure is low. The fuel pump pressure is weak.	Contact an authorized Delco service person. Replace the fuel filter. Delime or desoot the coils. Drain and replace the fuel. Contact an authorized Delco service person. Contact an authorized Delco service person.
There is smoke coming from the stack.	The wrong type of fuel is being used. There is not enough air to the burner. The fuel nozzle components are loose. The coils are sooted. The fuel nozzle is dirty.	Use only #1 or #2 diesel or kerosene. Contact an authorized Delco service person. Contact an authorized Delco service person. Clean the soot from the outside of the coils. Contact an authorized Delco service person.

**Delco Super Steamer
T721 Pump Drawing / Parts List**



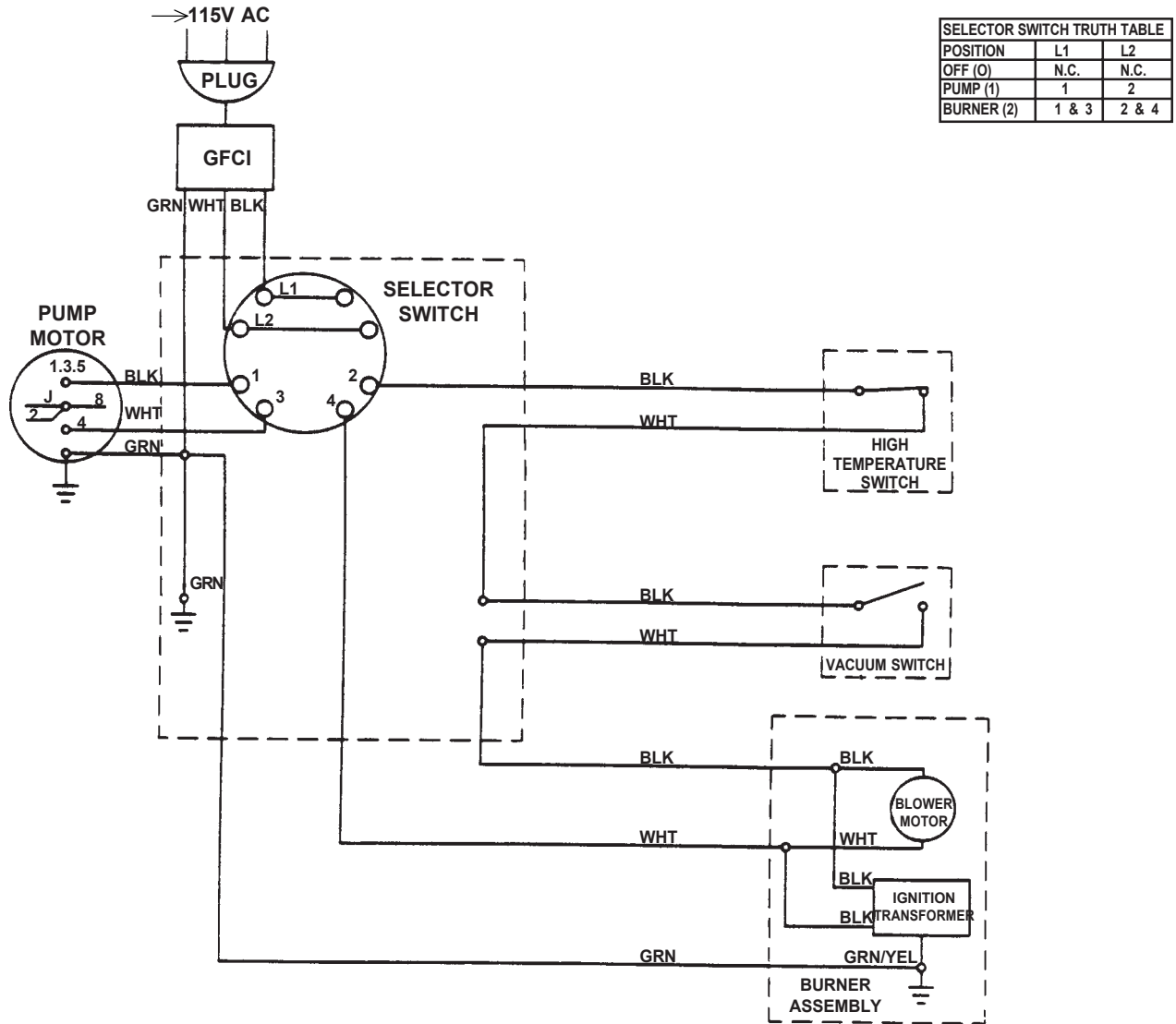
Ref.	Qty	Part No.	Description
1	1	49.1200.41	Pump Head, Brass
2	6	99.3175.00	Screw, M80 x 60
3	6	96.7014.00	Washer, M8.4 x 13 x 0.8
4	4	90.3841.00	O-Ring, .674 x .103
5	4	36.2003.66	Valve Seat
6	4	36.2001.76	Valve Plate
7	4	94.7376.00	Spring
8	4	36.2002.51	Valve Guide
9	4	90.3847.00	O-Ring, .797 x .103
10	4	98.2220.00	Cap, M24 x 2 x 16
11	4	36.7032.01	Valve Assembly
12	2	90.2703.00	Packing
13	2	50.2166.70	Intermediate Ring
14	2	50.1000.51	Head Ring
15	2	50.0805.70	Packing Retainer
16	2	90.3612.00	O-Ring, 1.239 x .070
17	2	90.1614.00	Oil Seal
18	8	99.1807.00	Screw M6 x 10
19	2	50.1500.74	Crankcase Cover
20	1	50.2116.51	Spacer
21	2	90.4097.00	O-Ring, 2.187 x .139
22	2	91.8329.00	Ball Bearing
23	1	49.0104.22	Crankcase
24	1	98.2103.00	Oil Dip Stick
25	1	49.2113.84	Cover Gasket
26	1	49.1603.22	Crankcase Cover
27	4	99.1837.00	Screw M6 x 14
28	3	90.3585.00	O-Ring, .426 x .070
29	1	97.5968.00	Oil Indicator
30	1	98.2041.00	Cap, 1/4-BSPP
31	1	49.0204.35	Crankshaft
32	2	97.7330.00	Wrist Pin
33	1	91.4878.00	Key
34	2	50.0300.01	Connecting Rod

**Delco Super Steamer
Pump Part List & Repair Kits**

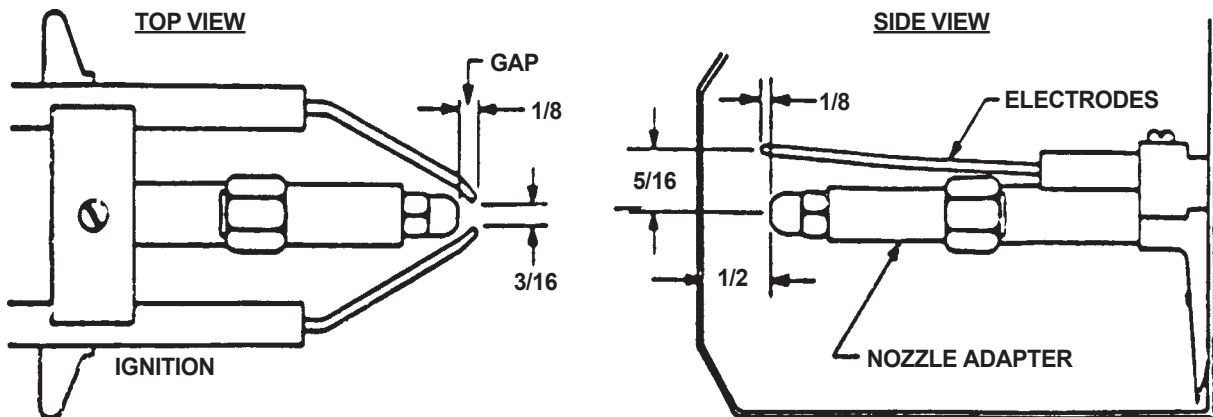
Ref.	Qty	Part No.	Description
236	4	96.6939.00	Washer, M6.4 x 10 x .7
37	4	99.1927.00	Screw, M6 x 35
38	2	50.0500.56	Piston Guide
39	2	96.7286.00	Washer, M14 x 28 x .5
40	2	50.0404.08	Piston (20 mm)
41	2	90.5067.00	Back-Up Ring, .433 x .551 x .055
42	2	96.7280.00	Washer, M14 x 18.5 x .5
43	2	47.2195.66	Piston Screw
44	1	50.2114.51	Spacer
45	1	90.1634.00	Oil Seal
46	1	50.2000.74	Pump Feet
47	4	96.7016.00	Washer, M8.4
48	4	99.3037.00	Screw, M8 x 16
49	1	98.2100.00	Cap, 3/8-BSPP
50	1	98.2176.00	Cap, 1/2-BSPP
51	1	96.7514.00	Washer, M21.5 x 27 x 1.5
52	1	96.7380.00	Washer, M17.5 x 23 x 1.5
53	2	90.2698.00	Seal, Low Pressure, 20mm 19.27
	6 Assemblies	Kit No. 1	Includes Ref. No's: 4, 5, 6, 7, 8, 11
	6 Assemblies	Kit No. 4	Includes Ref. No's. 9, 10
	3 Assemblies	Kit No. 6	Includes Ref. No's 28, 29, 41, 42, 43
	3 Assemblies	Kit No. 19	Includes Ref. No's 12, 53
	3 Assemblies	Kit No. 20	Includes Ref. No's 13
	6 Assemblies	Kit No. 21	Includes Ref. No's 14
	3 Assemblies	Kit No. 22	Includes Ref. No's 15, 16
	3 Assemblies	Kit No. 23	Includes Ref No's 17
	1 Assemblies	Kit No. 27	Includes Ref No's 12, 13, 14, 15, 16, 53

Note: All above kits will service 3 cylinders except Kits No. 6 (n/a) and 27 (1).

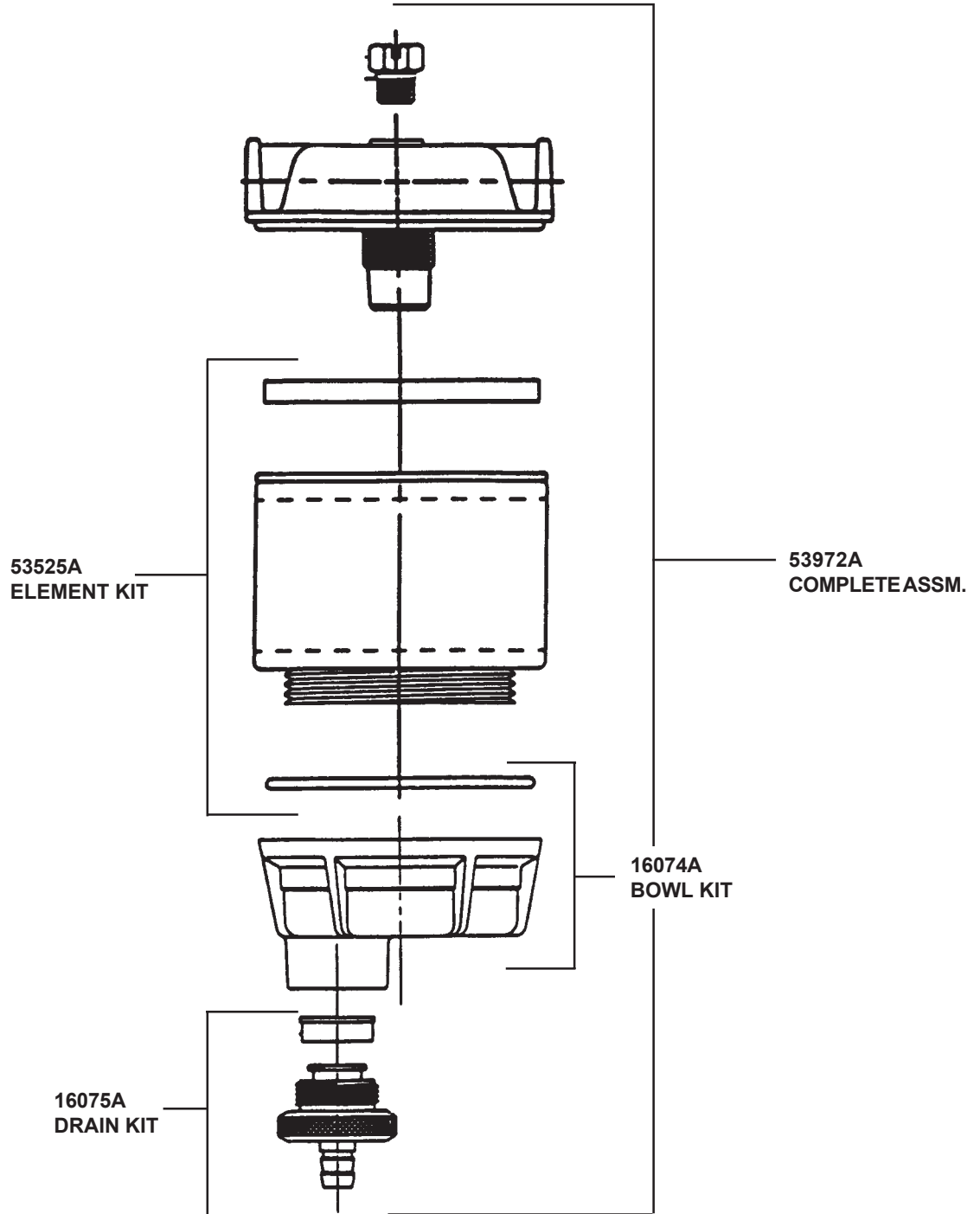
Delco Super Steamer Wiring Diagram



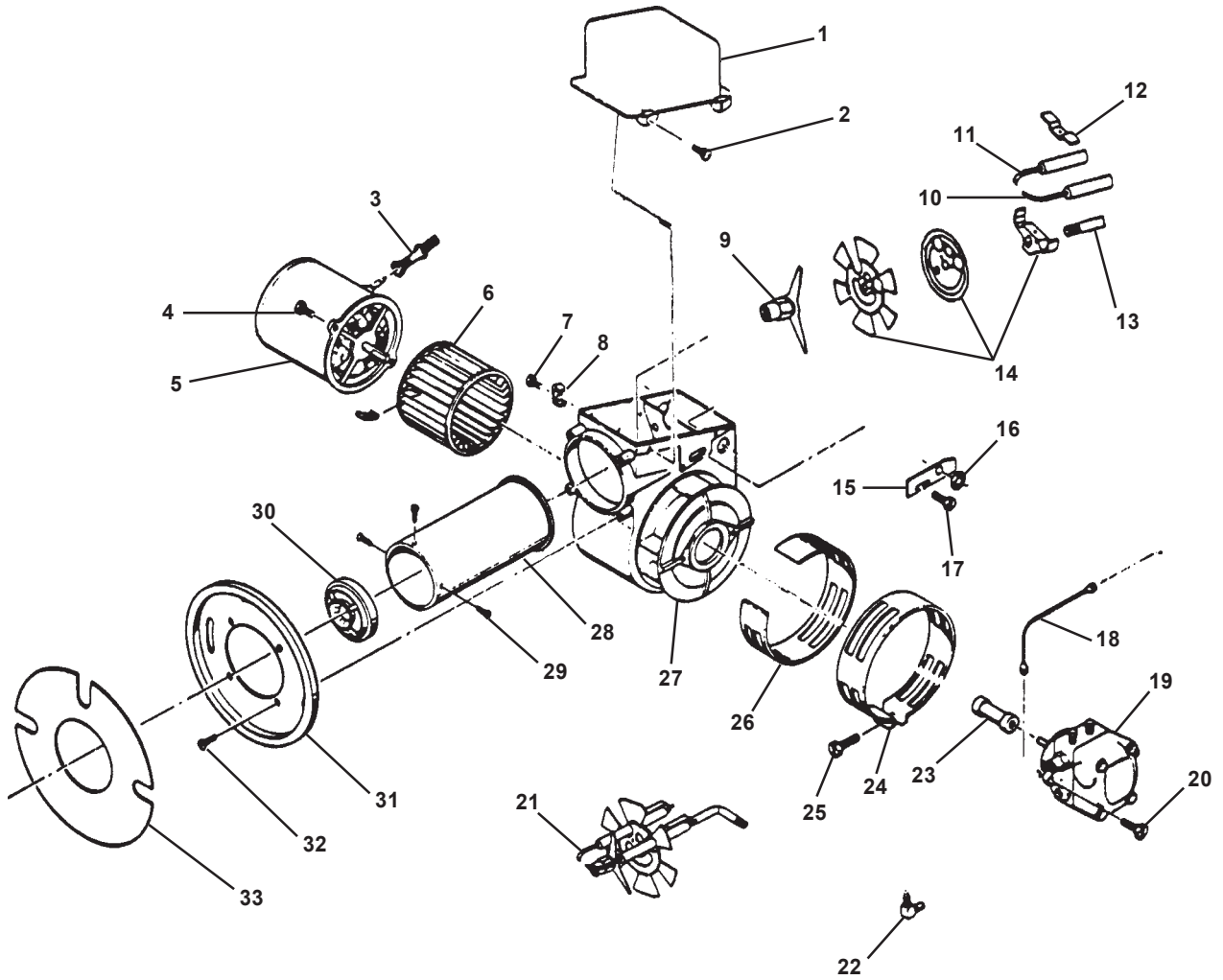
Delco Super Steamer Electrode Check Schematic



Clarke® - Delco Super Steamer
Fuel Filter Components



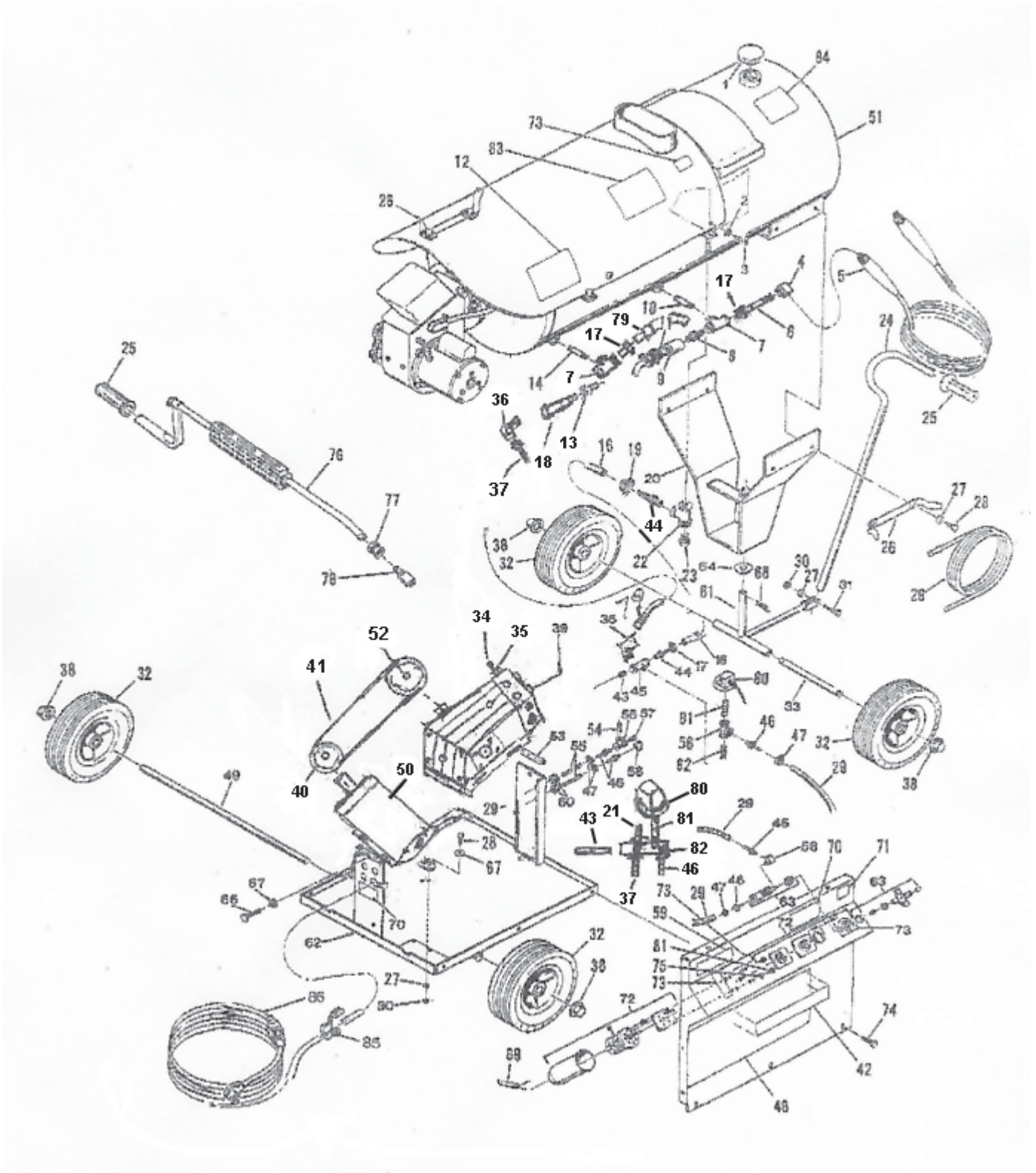
Delco Super Steamer Burner Drawing



**Delco Super Steamer
Burner Parts List**

Ref.	Qty.	Part No.	Description
1	1	198601	Transformer
2	2	198049	Screw - Transformer Hinge
3	1	192293	Cover - Motor Cord
4	2	198046	Screw - Motor Mounting
5	1	195786	Burner Motor
6		1193493	Fan
7	1	198048	Screw - Transformer Clip
8	1	192124	Clip - Transformer
9	1	50330A	Adapter - Nozzle
10	1	13701A	Electrode Assembly (LH)
11	1	13700A	Electrode Assembly (RH)
12	1	51816A	Electrode Clamp
13	1	54008A	Oil Pipe - Fitting
14	1	56427A	Support Assembly
15	1	192300	Cover, Oil Line Slot
16	1	195609	Locknut - Oil Line
17	1	198047	Screw - Oil Line Slot Cover
18	1	196625	Oil Line Assembly 8"
19	1	197216	Fuel Unit
20	1	198046	Screw - Mounting
21	1	54237A	Gun, Burner, Asm.
22	1	193107	Elbow - Oil Line
23	1	192301	Coupling - Pump
24	1	50511A	Band - Outer
25	1	198046	Screw - Air Band
26	1	191525	Band - Inner Air
27	1	194413	Housing - Fan
28	1	198754	Air Tube 3 ¹ / ₄ "
29	1	198403	Screw - Air Cone
30	1	191757	Cone - Air
31	1	193615	Flange - Mounting
32	1	198204	Screw - Flange Mounting
33	2	193871	Gasket

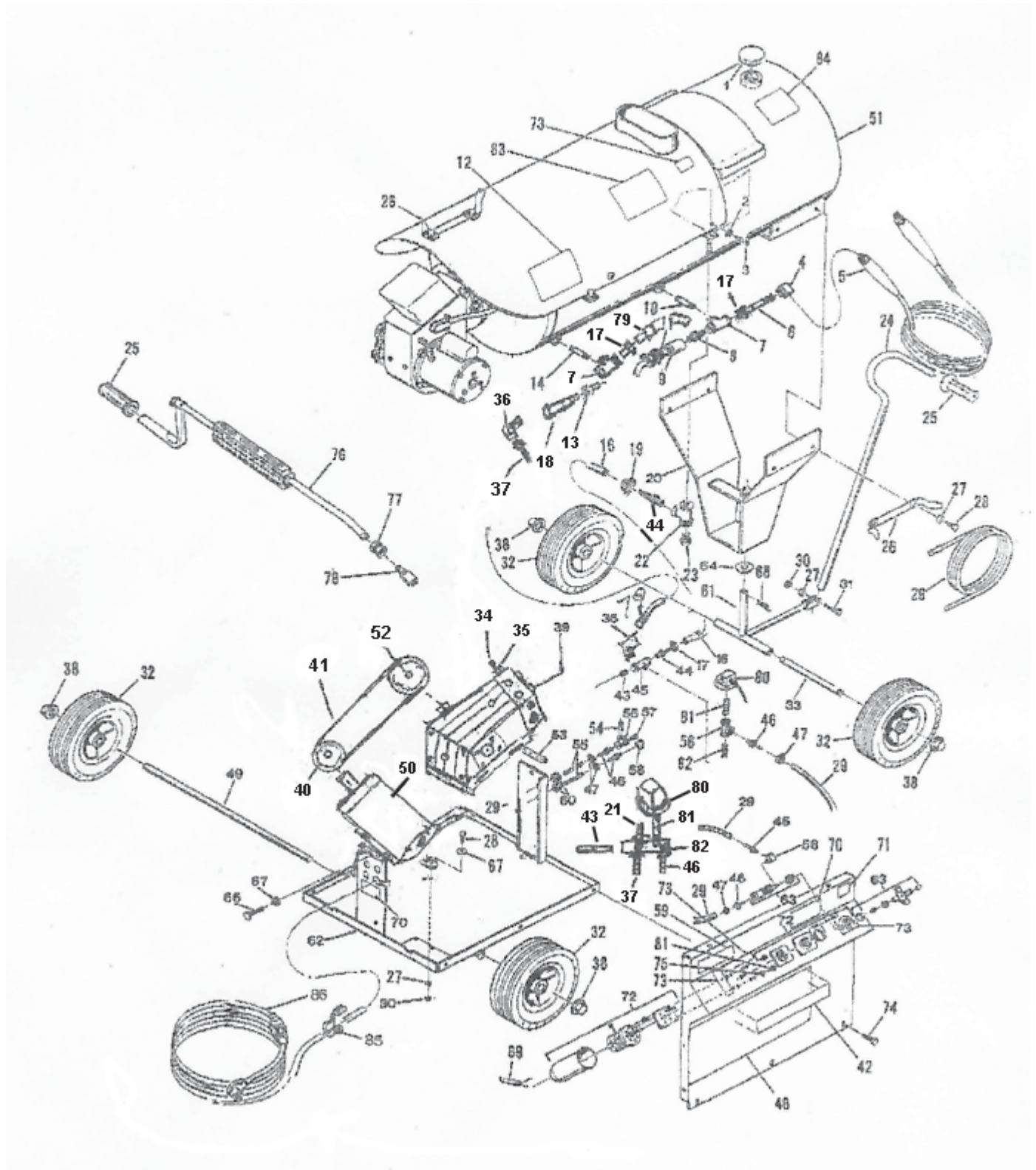
Delco Super Steamer
Machine Assembly Drawing #1



**Delco Super Steamer
Machine Assembly Parts List #1**

Ref.	Part No.	Qty	Description
1	52052A	1	Cap-Fuel Gauge, 18"
2	170858	4	Washer, Flat ¼" S.S.
3	171112	4	Screw ¼"-20 x ½"
4	170237	1	Elbow 3/8" Galv.
5	54876A	1	Hose Asm. 3/8"x50'
6	170221	1	Nipple 3/8" x 6" Galv.
7	8002873	2	Tee, , 1/2 in. Brass
8	198468	1	Switch, High Temp 340°
9	170956	1	Coupling, Pipe ½ PVCx
10	170418	1	Nipple, Pipe ½x5" Blk.
11	170637	1	Connector, Conduit
12	77032A	1	Label, Danger Strm. Explosion
13	170002	1	Bushing Pipe ½ x ¼ Brass
14	170419	1	Nipple, Pipe ½" x 5-½" Blk.
15	170248	1	Elbow Side Outlet ½" Galv.
16	170966	?	Hose 2 Braid 5/8"xBlk Ft.
17	170001	2	Bushing ½x3/8 Brass
18	199033	1	Valve Relief
19	192116	2	Clamp Hose #10
20	199004	1	Support V-Front
	68502A	1	Support V-Front
21	194409	1	Hosebarb 3/8"x5/8" w 7/32"
22	170265	1	Tee, Reducing ½x½x3/8 Galv.
23	170014	1	Plug, Pipe ½" Brass
24	194204	1	Handle, Tow Painted
	64435A	1	Handle, Tow S.S.
25	194208	1	Grip, Hand 7/8" ID Blk.
26	194219	1	Rack, Hose
27	980652	9	Washer, Lock 5/16"
28	85813A	6	Screw 5/16"-18x1" Hx Hd
29	170974	10'	Tubing, PVC ¼"x Bulk Ft.
30	170854	5	Nut 5/16-18 Hx
31	170818	1	Screw 5/16-18 x 1¾" Hx Hd
32	59958A	4	Wheel 410/350x4" Pltd.
33	60140A	1	Axle, Front Delco
34	199027	1	Valve, Air 1/8" NPT Male
35	170004	1	Bushing, Pipe 3/8x1/8 Brass
36	170039	1	3/8 in. Street Elbow
37	170028	2	3/8 x 1/4 in. Hose Barb
38	50429A	1	Palnut 5/8" Nickel Plated
39	197271	1	Pump T721
40	B047	1	Motor Pulley, 5/8 in. Shaft
41	B-27	1	V-Belt, B27
42	74107A	1	Label, I.D. Super Steamer
43	170221	1	Nipple Pipe ½" x 4 Galv.
44	170034	1	Hose Barb 3/8 in. c 5/8 in.
45	170262	1	Tee, Reducing ½x½x¼ Galv
46	720271	6	Adapter ¼x¼ MPT
47	722021	5	Clamp #4
48	74105A	1	Label, Delco, Sweep
49	60139A	1	Axle, Rear 18"
50	195792	1	Motor ¾ Hp 1 Phase
51	19128A	1	Coil & Tank Assembly Pntd
	11612A	1	Coil & Tank Assembly SS
52	70275	1	Pump Pulley, 24 mm
53	193951	1	Trim-Blk Vinyl Double Lip
54	170206	1	Nipple, Pipe ¼ x Close Galv.
55	170964	8.1'	Hose Fuel ¼ x Bulk Ft
56	170252	1	Tee, Pipe ¼" Galv.
57	170486	1	Plug, Pipe ¼ Black
58	170040	2	Elbow, Street ¼ x 90° Brass
59	77024A	1	Label, Warning

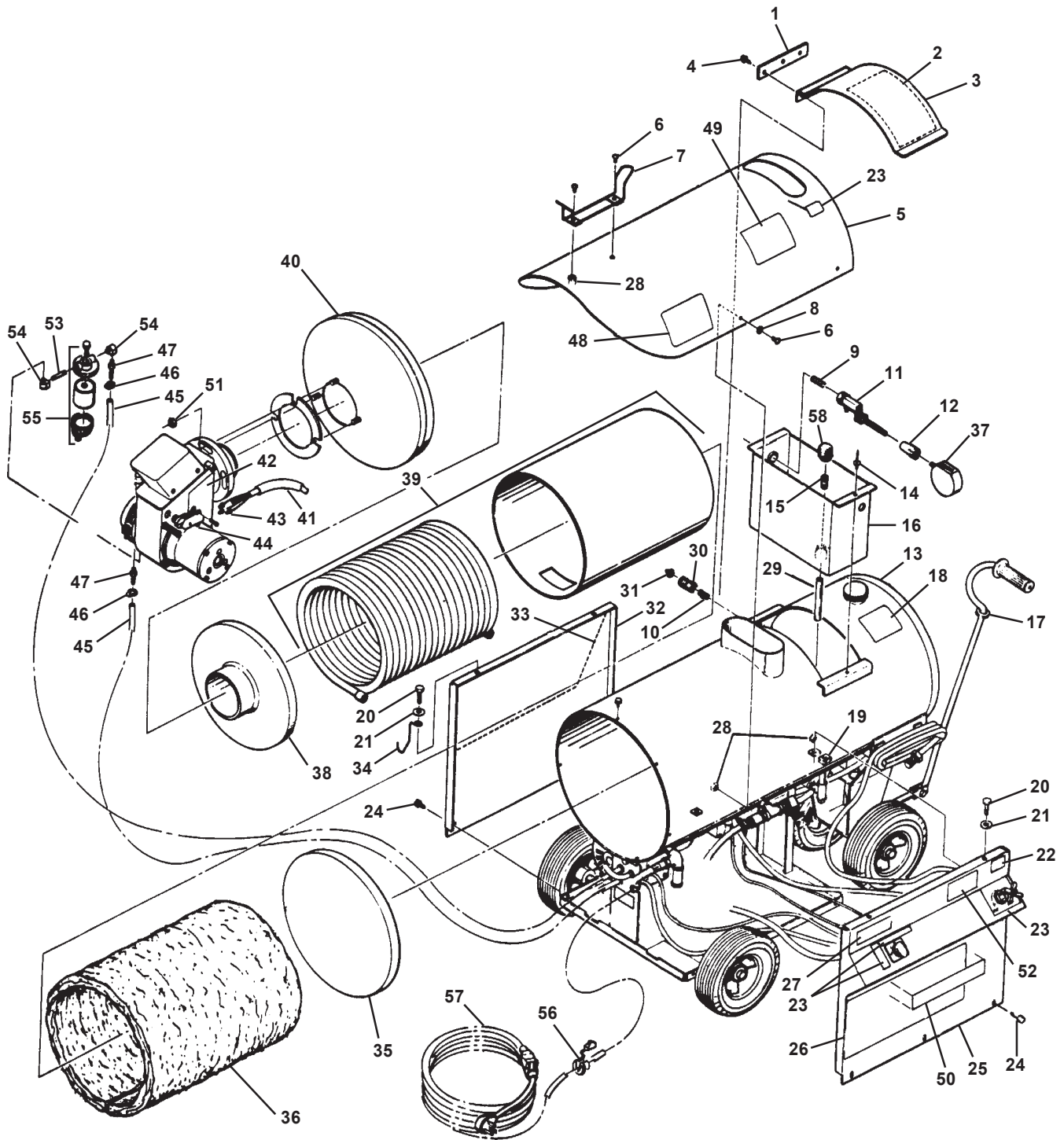
Delco Super Steamer
Machine Assembly Drawing #1



**Delco Super Steamer
Machine Assembly Parts List #1**

Ref.	Part No.	Qty	Description
60	193943	4	Grommet Rubber ½ x 31/32
61	68369A	1	T-Bar Wldmt Pntd
	68368A	1	T-Bar Wldmt S.S.
62	191394	1	Undercarriage Wldmt Pntd
	68405A	1	Undercarriage Wldmt S.S.
63	199081	1	Valve, Metering ¼"
64	170875	1	Washer Flat 2¼x1¼ BZP
65	170850	2	Nut, Panel 5/16-18
66	85814A	2	Screw 5/16-18 x 1¼ Hx Hd
67	170860	6	Washer, Flat 5/16" Plated
68	170940	1	Pin #10 Hitch
69	199720	1	Harness, Wiring 115V
70	77027A	1	Label, Warning, Bi-Lingual
71	77039A	1	Label, Made in the USA
72	198450	1	Switch (included w/#69)
73	77031A	1	Label, Control Panel Bi-Lingual
74	170910	6	Screw, Tapping 5/16x¾ Hx
75	980603	3	Washer 195I x 3950SH #110
76	194098	1	Assembly Gun Open 40"
77	231131	1	Bushing 3/8 x ¼
78	196371	1	Nozzle, Steam 3/32 Orifice
79	194388	1	Hose, Pulsation 3/8 x 52"
80	198433	1	Switch, Vacuum
81	56329A	1	Nipple ¼ x 2½ NPT SS
82	195693	1	Intake Manifold
83	77033A	1	Label, Warning, Bi Lingual
84	77028A	1	Label, Caution Diesel Fuel
85	191775	1	Bushing, Strain Relief
86	43102A	1	Cord, GFCI 20A 120V 35'

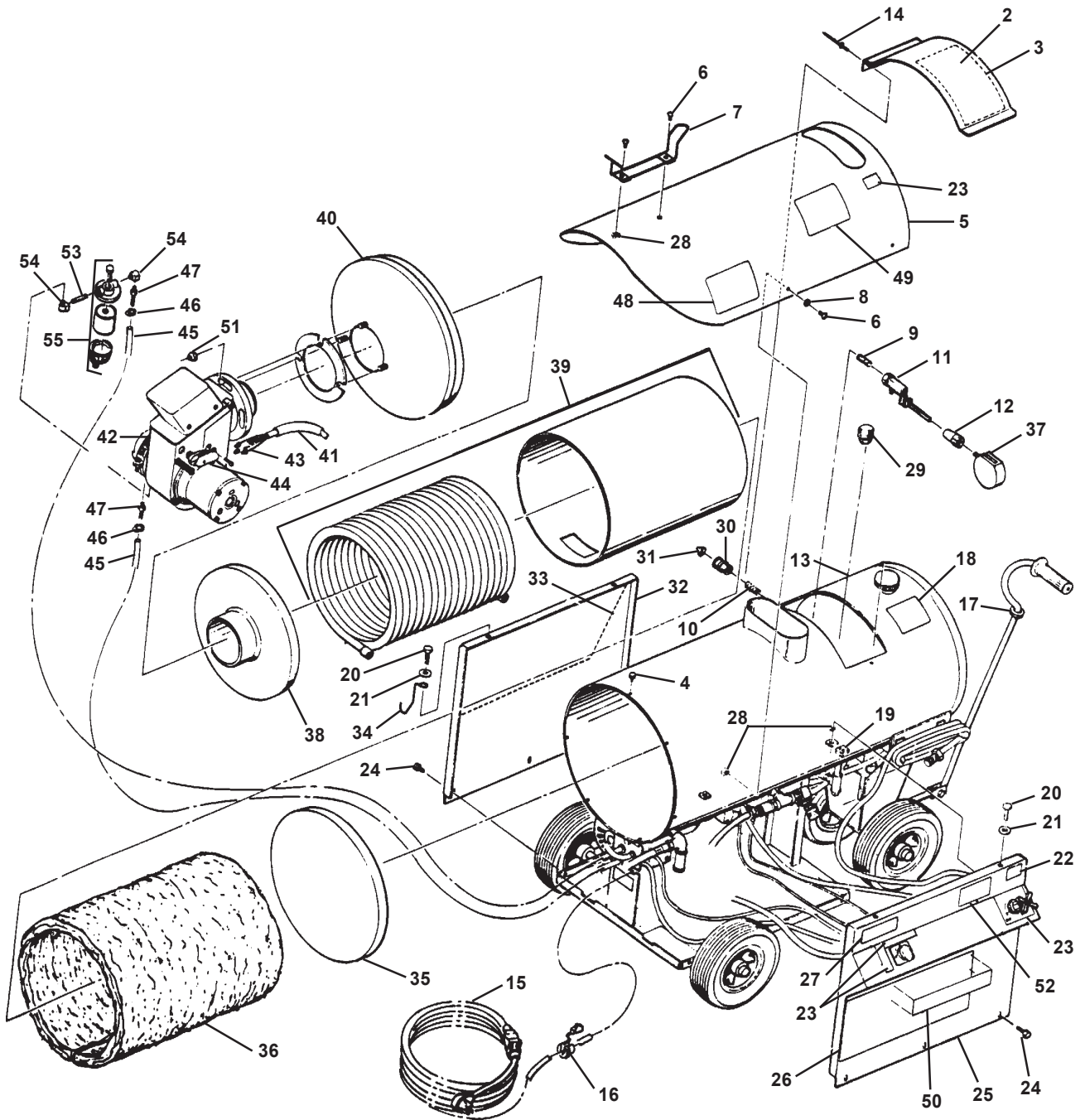
Delco Super Steamer (Painted)
Machine Assembly Parts List #2



**Delco Super Steamer (Painted)
Machine Assembly Parts List #2**

Ref.	Part No.	Qty	Description
1	195589	1	Stop Lid Assembly
2	77030A	1	Label, Op. Instr. Bi-Lingual
3	195589	1	Lid, Float, Tank, Wldmt. Pntd.
4	170906	10	Screw #10 x 1/2"
5	198326	1	Shield, Heat 18" Pntd.
6	171112	6	Screw 1/4-20 x 1/2
7	194219	1	Rack, Hose
8	170858	4	Washer, Flat 1/4"SS
9	170219	1	Nipple 1/2" x 2 1/2"
10	170216	1	Nipple, Pipe 1/2" Close Galv.
11	199067	1	Valve, Float
12	29575A	1	Nut, Retaining, Float Valve
13	68331A	1	Tank Assembly Pntd
14	170928	1	Rivet, Pop 18" Steel, Long
15	170106	1	Nipple, Pipe 1/2 x Close Brass
16	198560	1	Tank, Float SS Welded
17	193944	1	Grommet, Rubber 3/4 x 13/8"
18	77028A	1	Label, Caution
19	170850	6	Nut, Panel 5/16"-18
20	85814A	6	Screw 5/16-18 x 1.25 Hx Hd.
21	170886	4	Washer Flat 1/4"
22	77039A	1	Label, Made In USA
23	77031A	1	Label, Ctrl. Panel, Bi-Lingual
24	170910	6	Screw Tapping 5/16 x 3/4 Hx
25	66371A	1	Panel Weldment Pntd.
26	74105A	1	Label, Sweep
27	77024A	1	Label, Warning, Electrical
28	170793	6	Nut Clinch 1/4-20
29	170222	1	Nipple, Pipe 1/2" x 6" Galv.
30	170071	1	Fitting 3/4GH x 1/2" NPT Female
31	198078	1	Screen, Hose, Washer
32	196912	1	Panel, Rear Pntd.
33	74106A	1	Label, Delco Sweep Right
34	194117	2	Hook Gun
35	29644A	1	Disc, Insulator
36	194808	1	Insulation, Blanket
37	191519	1	Ball, Float Plastic
38	29645A	1	Insulation, Drum
39	61646A	1	Coil 18" w/3 Pancakes
40	60750A	1	Burner Head Asm. Pntd
41	170963	1.58'	Sleeving PVC 1/2" x Bulk
42	191731	1	Burner, Oil 115V 230-23
43	911177	3	Nut
44	170641	2	Strain Relief 3/8 x 90°
45	170964	8.1'	Hose, Fuel 1/4" x Bulk (Ft.)
46	722021	7	Clamp #4 Hose
47	720271	5	Adapter 1/4"H to 1/4" MPT
48	77033A	1	Label, Warning, Bilingual
49	77032A	1	Label, Danger Steam Explosion
50	74107A	1	Label, I.D.
51	171101	3	Nut, Whizlock 3/8-16
52	77027A	1	Label, Warning, Bilingual
53	170207	1	Nipple 1/4" x 2 1/2"
54	170040	4	Elbow Street 1/4 x 90°
55	53972A	1	Filter Asm. Fuel Delco
56	191775	1	Bushing, Strain Relief
57	43102A	1	GFCI 20A 120V 35' Cord
58	198072	1	Filter, Solution
59	196390	1	Fuel Nozzle, 275-808

Delco Super Steamer (Stainless Steel)
Machine Assembly Drawing #3



Delco Super Steamer (Stainless Steel)
Machine Assembly Parts List #3

Ref.	Part No.	Qty	Description
2	77030A	1	Label, Op. Instr. Bi-Lingual
3	65408A	1	Lid, Float, Tank, Wldmt SS
4	170906	10	Screw #10 x 1/2"
5	67526A	1	Shield, Heat 18" SS
6	171112	6	Screw 1/4-20 x 1/2"
7	194219	1	Rack, Hose
8	170858	4	Washer, Flat 1/4" SS
9	170219	1	Nipple 1/2" x 2 1/2"
10	170216	1	Nipple, Pipe 1/2" Close Galv.
11	199067	1	Valve, Float
12	29575A	1	Nut, Retaining, Float Valve
13	68353A	1	Tank Assembly S.S.
14	170928	3	River, Pop 18" Steel Long
15	43102A	1	Cord, GFCI 20A 120V 35'
16	191775	1	Bushing, Strain Relief
17	193944	1	Grommet, Rubber 3/4 x 13/8"
18	77028A	1	Label, Caution
19	170850	6	Nut, Panel 5/16"-18
20	85814A	6	Screw 5/16-18 x 1.25 Hx Hd.
21	170886	4	Washer Flat 1/4"
22	77039A	1	Label, Made In USA
23	77031A	1	Label, Ctrl. Panel, Bi-Lingual
24	170910	6	Screw Tapping 5/16 x 3/4 Hx
25	66372A	1	Panel Weldment S.S.
26	74105A	1	Label, Sweep
27	77024A	1	Label, Warning, Electrical
28	170793	6	Nut Clinch 1/4-20
29	198072	1	Filter, Solution
30	170071	1	Fitting 3/4GH x 1/2" NPT Female
31	198078	1	Screen, Hose, Washer
32	66360A	1	Panel Rear S.S.
33	74106A	1	Label, Delco Sweep Right
34	194117	2	Hook Gun
35	29644A	1	Disc, Insulator
36	194808	1	Insulation, Blanket
37	191519	1	Ball, Float Plastic
38	29645A	1	Insulation, Drum
39	192176	1	Coil 18" w/3 Pancakes
40	66773A	1	Burner Head Asm. S.S.
41	170963	1.58'	Sleeving PVC 1/2" x Bulk
42	191731	1	Burner, Oil 115V 230-23
43	911177	3	Nut
44	170641	2	Strain Relief 3/8 x 90°
45	170964	8.1'	Hose, Fuel 1/4" x Bulk (Ft.)
46	722021	7	Clamp #4 Hose
47	720271	5	Adapter 1/4"H to 1/4" MPT
48	77033A	1	Label, Warning, Bilingual
49	77032A	1	Label, Danger Steam Explosion
50	74167A	1	Label, I.D.
51	171101	3	Nut, Whizlock 3/8-16
52	77027A	1	Label, Warning, Bilingual
53	170207	1	Nipple 1/4" x 2 1/2"
54	170040	4	Elbow Street 1/4 x 90°
55	53972A	1	Filter Asm. Fuel Delco

